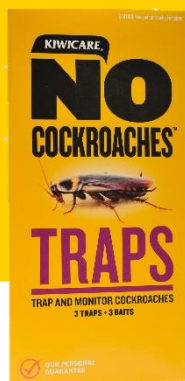


KIWICARE®

Technical Sheet

NO Cockroach Traps

Safe and effective cockroach control and monitoring

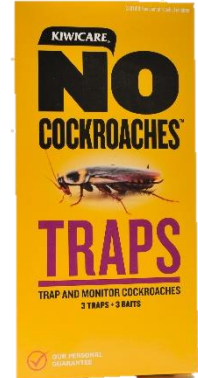


www.kiwicare.co.nz

NO Cockroach Traps

Benefits and Features

- Effective for control and monitoring, giving early warning of infestation.
- No chemical insecticide.
- Safe for use in kitchens and larders.
- Use as step 1 of the Kiwicare [1-2-3 Cockroach Control Programme](#).



1. BAIT: Using Kiwicare **NO Cockroaches Nest Killer Gel Bait** place small drops 30 cm apart where Cockroaches have been seen.

2. SPRAY & FUMIGATE: Deny Cockroaches hiding places. Spray cracks and crevices where Cockroaches hide with Kiwicare **NO Cockroaches Nest Killer Spray**. Fumigate with Kiwicare **NO Cockroaches Fumigator** to flush Cockroaches out.

3. TRAP: Trap and monitor for Cockroaches using Kiwicare **NO Cockroach Traps**.

Controls

- American cockroaches
- German cockroaches
- Oriental cockroaches

Directions

1. Open trap and peel paper cover from glue surface.
2. Open a foil sachet containing a perforated plastic bait pouch/sachet.
3. Place the unopened bait pouch in the centre of the glue board, perforations uppermost.
4. Fold the two sides of the lid over the trap and insert tab on one side into a slot on the other side.
5. Place the trap in a suitable place where cockroaches are or might be a problem. i.e. side of fridge, pantry, laundry, etc.
6. Check traps regularly.

For Best Results

- Deny Cockroaches access to other food; wipe up spills and keep food in sealed containers.
- For Cockroaches in roof spaces or other voids use [NO Cockroaches Fumigator](#) in the voids.
- See the [short video](#) on Kiwicare.co.nz for more information on Cockroach control.

Active Ingredients

Non-toxic bait pellets

Registration

NZFSA Approved Cockroach Trap Maintenance Compound (non-dairy) Type D-1

EPA Approval Number: N/A

Available As

- 3 pack

Complementary Products

- [NO Cockroaches Nest Killer Spray](#)
- [NO Cockroaches Fumigator](#)
- [NO Cockroaches Nest Killer Gel Bait](#)

Last Updated: August 2019

Kiwicare.co.nz

For information, advice and our interactive
problem solver

Kiwicare Corporation Limited
225 Maces Road, Bromley, Christchurch
Phone (03) 389-0778